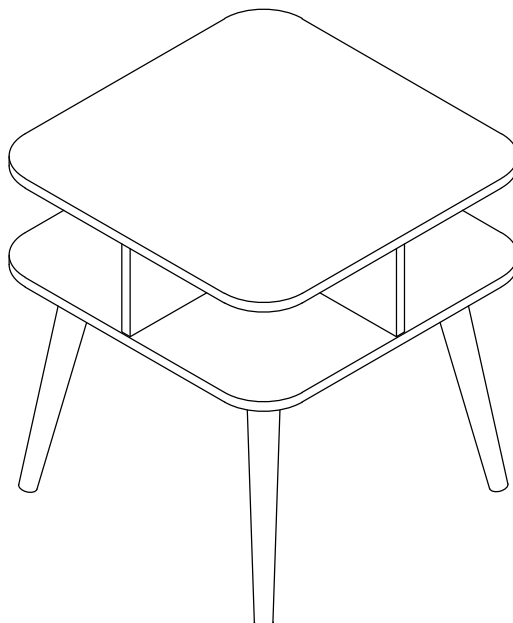
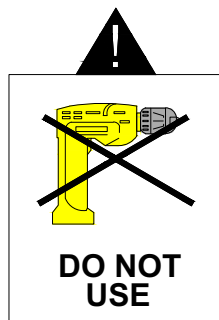


# SAXTON SIDE TABLE ASSEMBLY INSTRUCTIONS



## **IMPORTANT FOR DOMESTIC USE ONLY PLEASE READ BEFORE YOU CONTINUE FURTHER**

THE PRODUCT YOU HAVE PURCHASED WILL GIVE YOU MANY YEARS OF SERVICE IF YOU FOLLOW THE GUIDELINES FOR ITS SAFE ASSEMBLY AND PERIODIC MAINTENANCE AND CLEANING.

ASSEMBLE ON A SOFT CLEAN SURFACE.

DO NOT USE ANY TOOLS OTHER THAN THOSE SHOWN.

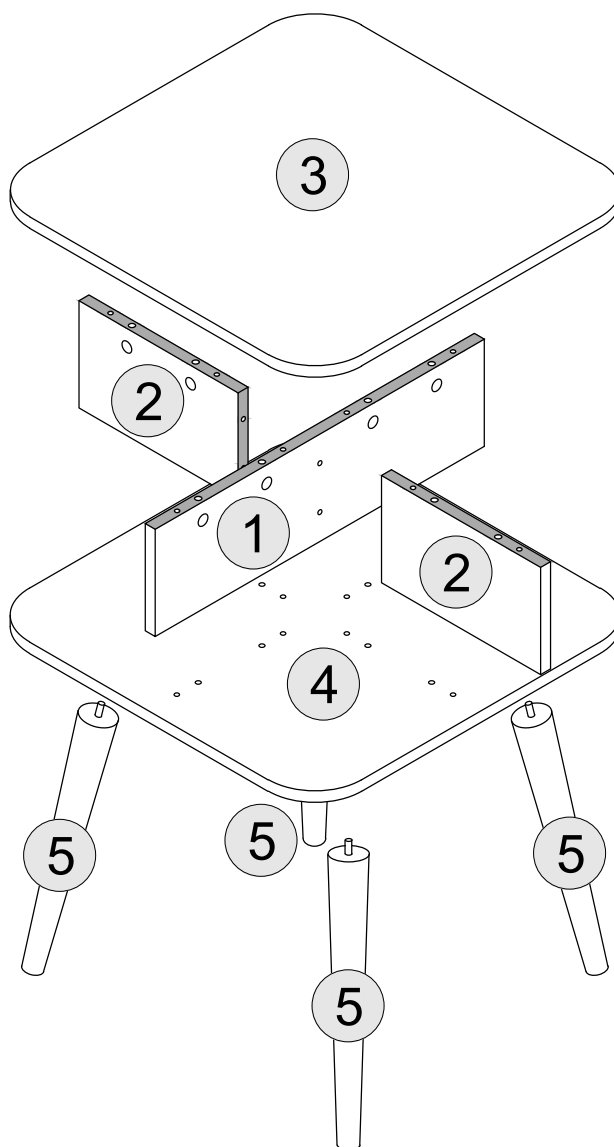
ANY SPANNERS OR ALLEN KEYS REQUIRED ARE INCLUDED WITH THE FITTINGS KIT.

DO NOT FOR ANY REASON USE A POWER TOOL TO ASSEMBLE THIS PRODUCT. ITS USE WILL INVALIDATE ANY CLAIM YOU MAY HAVE AND COULD MAKE THIS PRODUCT UNSAFE.

DEPENDING ON THE AMOUNT OF USE THIS PRODUCT RECEIVES IT MAY BE NECESSARY TO TIGHTEN UP THE FIXINGS FROM TIME TO TIME. THIS IS COMPLETELY NORMAL FOR ANY FLAT PACK FURNITURE. DO NOT OVERTIGHTEN FIXING.

FOR CLEANING, YOU MAY USE A DAMP CLOTH (NOT WET) DO NOT USE POLISH, DETERGENT OR CHEMICAL CLEANERS.

THE SURFACE OF THIS ITEM IS NOT HEAT RESISTANT. ALWAYS USE A PLACE MAT UNDER HOT OR COLD ITEMS TO PREVENT MARKING.

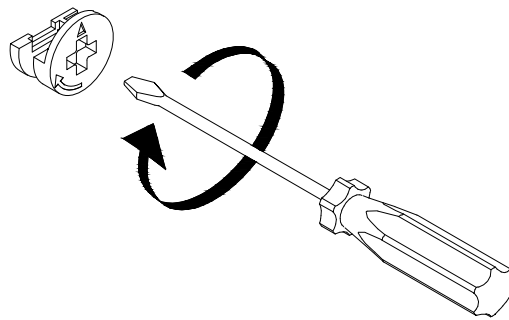


## PART LIST

<u>Part Number</u>	<u>Part Code</u>	<u>Part Description</u>	<u>Quantity</u>	<u>Carton</u>
1	S300-302-062-EU1-01	Large Centre Panel	1	1/1
2	S300-302-062-EU1-02	Small Centre Panel	2	1/1
3	S300-302-062-EU1-03	Top Panel	1	1/1
4	S300-302-062-EU1-04	Bottom Panel	1	1/1
5	S300-302-062-EU1-05	Leg	4	1/1

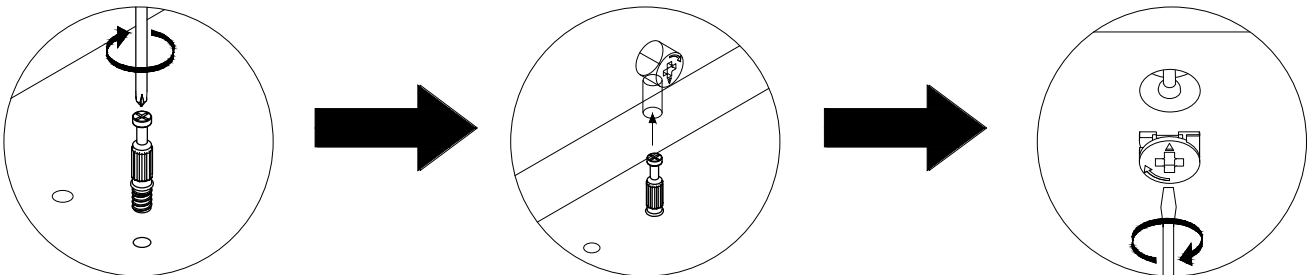
## HARDWARE LIST

A		DOWEL 6 X 30MM	18 PCS
B		SCREW M6 X 50MM	8 PCS
C		SCREW M3.5 X 20MM	16 PCS
D		CAM BOLT + CAM NUT	8 SETS
E		ALLEN KEY	1 PC
F		ANGLED LEG FIXING PLATE	4 PCS
G		CAP	8 PCS



(SCREWDRIVER NOT PROVIDED)

USE A FLAT HEAD SCREWDRIVER TO TIGHTEN THE CAM NUTS. A QUARTER TURN CLOCKWISE IS ALL THAT IS NEEDED.



STEP 1 - USE A CROSS SLOT SCREWDRIVER TO TIGHTEN THE CAM BOLT INTO THE HOLE.

STEP 2 - ALIGN THE CAM BOLT WITH THE HOLE AND PUSH TOGETHER UNTIL FLUSH. ( MAKE SURE THE ARROW OF THE CAM LOCK IS POINTING TOWARD ON THE EDGE OF THE PANEL.)

STEP 3 - THE HEAD OF THE BOLT GOES INTO THE WIDE MOUTH OF THE CAM LOCK. YOU THEN TURN THE LOCK SO THE NARROW PART CLOSES OVER THE BOLT.

# STEP 1

PARTS REQUIRED

1 - LARGE CENTRE PANEL x1

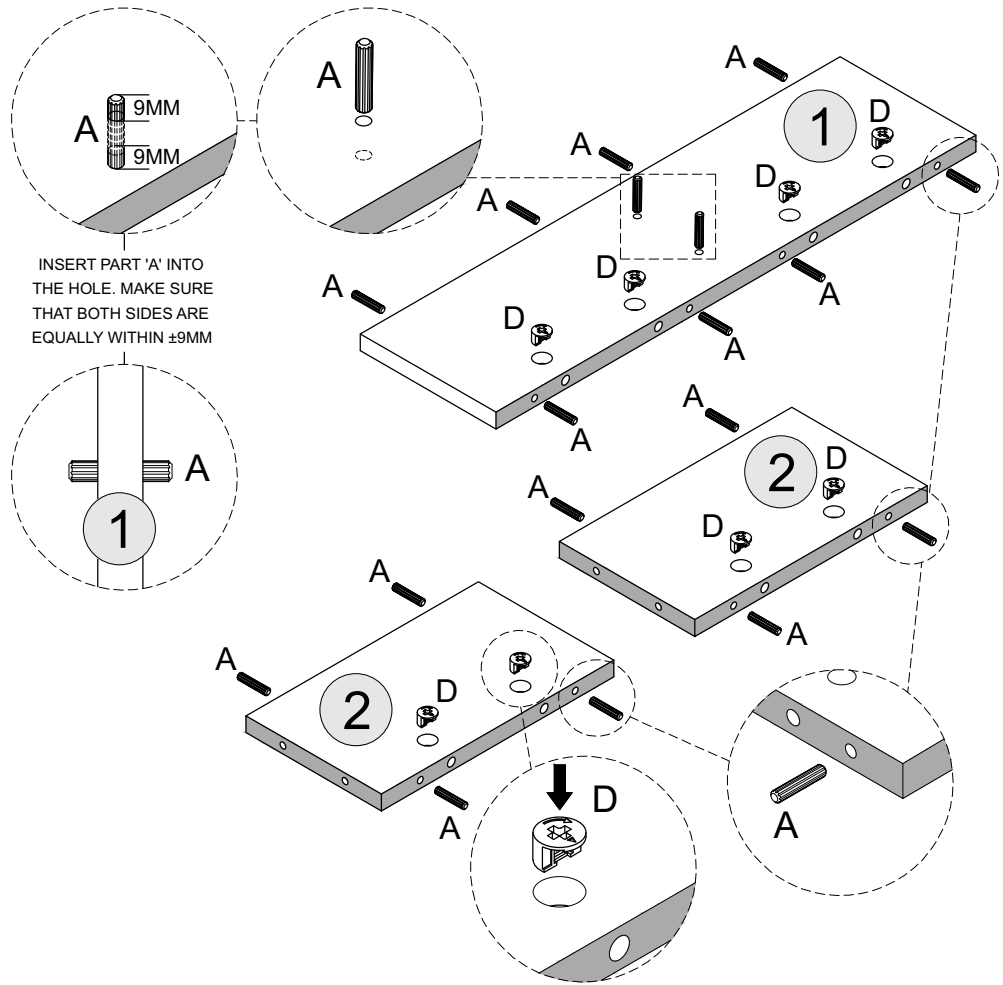
2 - SMALL CENTRE PANEL x2

HARDWARE REQUIRED

A  18

D  08

TOOLS REQUIRED



# STEP 2

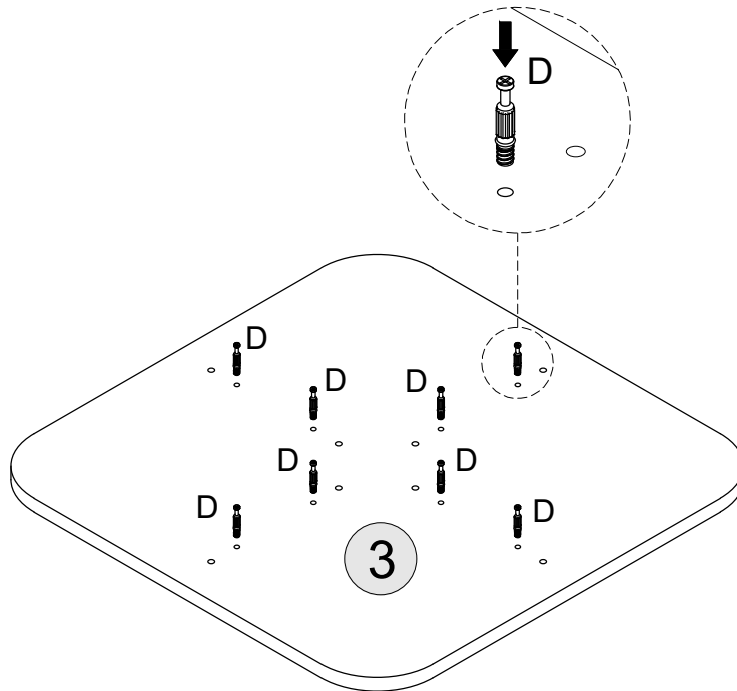
PARTS REQUIRED

3 - TOP PANEL x1

HARDWARE REQUIRED

D  08

TOOLS REQUIRED



# STEP 3

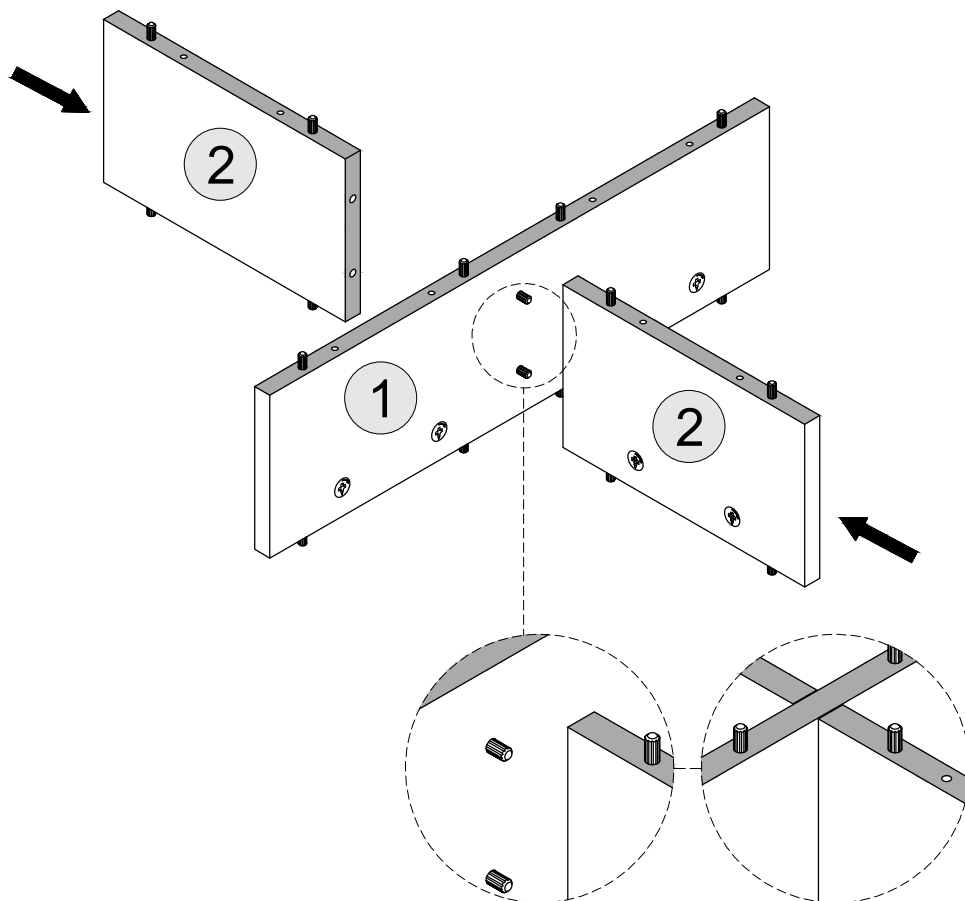
PARTS REQUIRED

1 - LARGE CENTRE PANEL x1

2 - SMALL CENTRE PANEL x2

HARDWARE REQUIRED

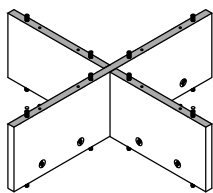
TOOLS REQUIRED



# STEP 4

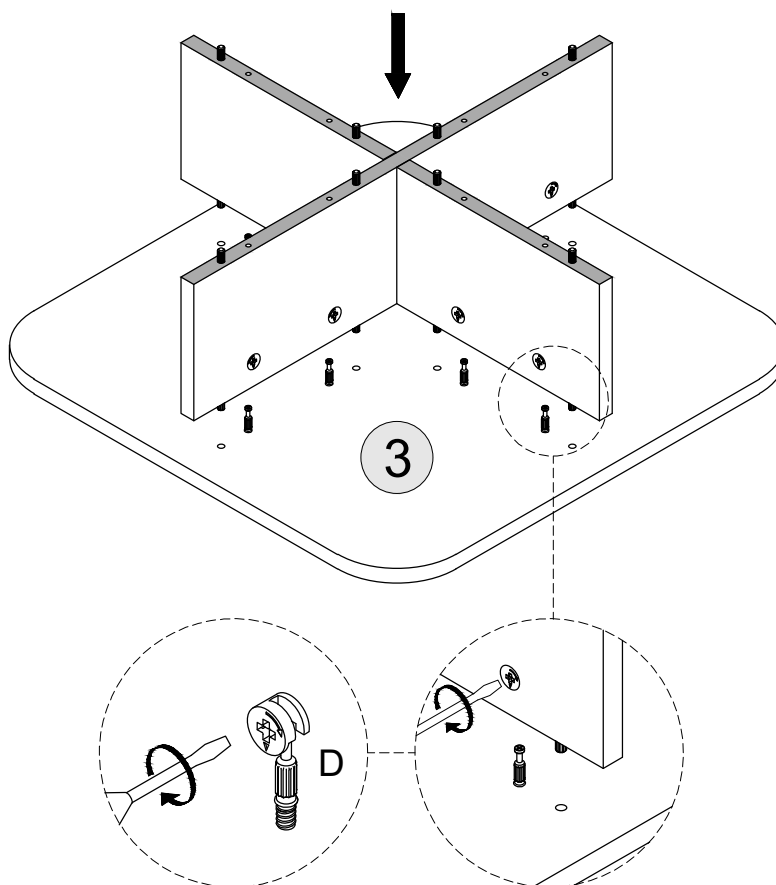
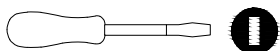
PARTS REQUIRED

3 - TOP PANEL x1



HARDWARE REQUIRED

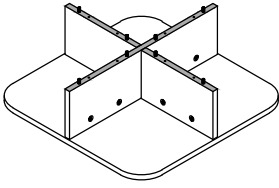
TOOLS REQUIRED



# STEP 5

PARTS REQUIRED

4 - BOTTOM PANEL x1

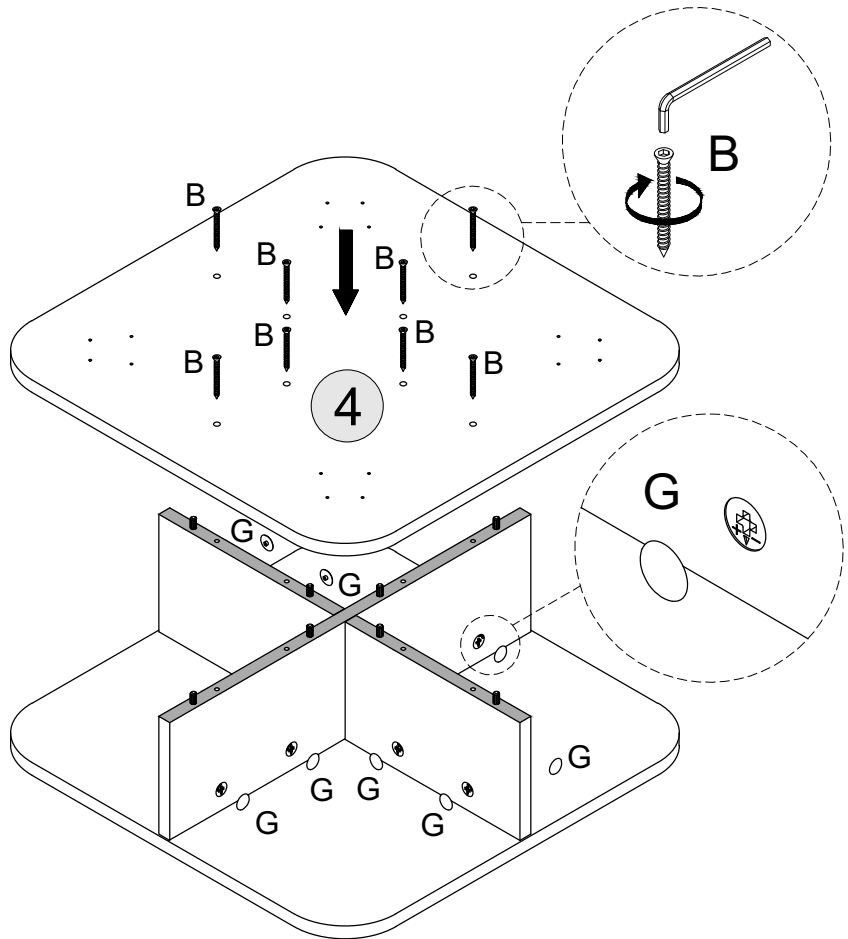


HARDWARE REQUIRED

B  08

G  08

TOOLS REQUIRED



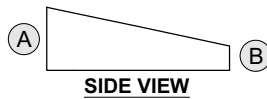
# STEP 6

## EXAMPLE FOR ASSEMBLING ON STEP 7

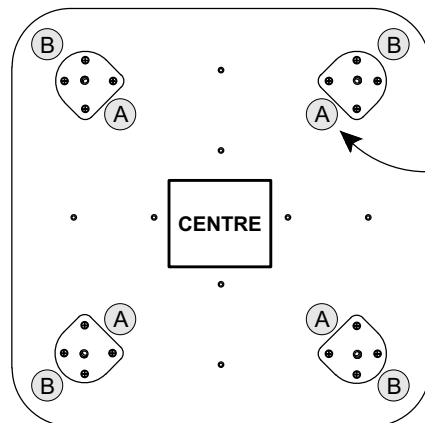
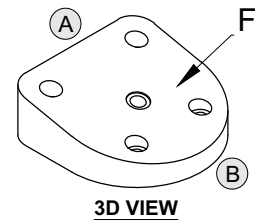
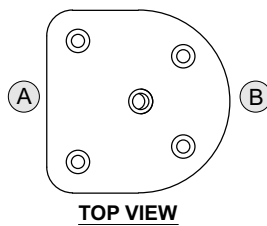
PARTS REQUIRED

HARDWARE REQUIRED

TOOLS REQUIRED



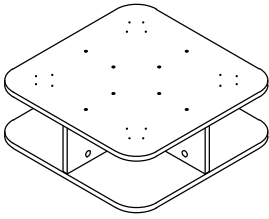
**(A) THE HIGHER PART**  
**(B) THE LOWER PART**



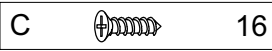
MAKE SURE THE HIGHER SIDE OF PART (F) IS POINTING TOWARD THE CENTRE(A) AND THE LOWER SIDE (B) IS POINTING OUTWARD.

# STEP 7

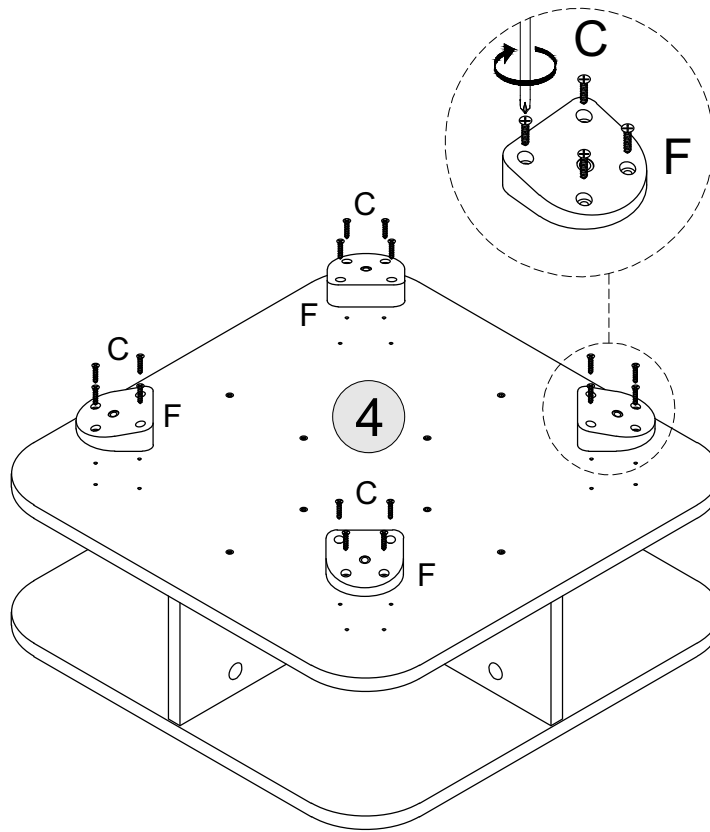
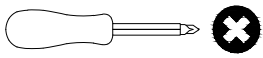
PARTS REQUIRED



HARDWARE REQUIRED

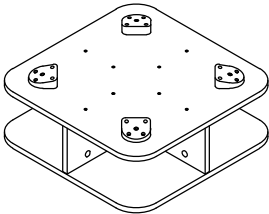


TOOLS REQUIRED



# STEP 8

PARTS REQUIRED



HARDWARE REQUIRED

TOOLS REQUIRED

